

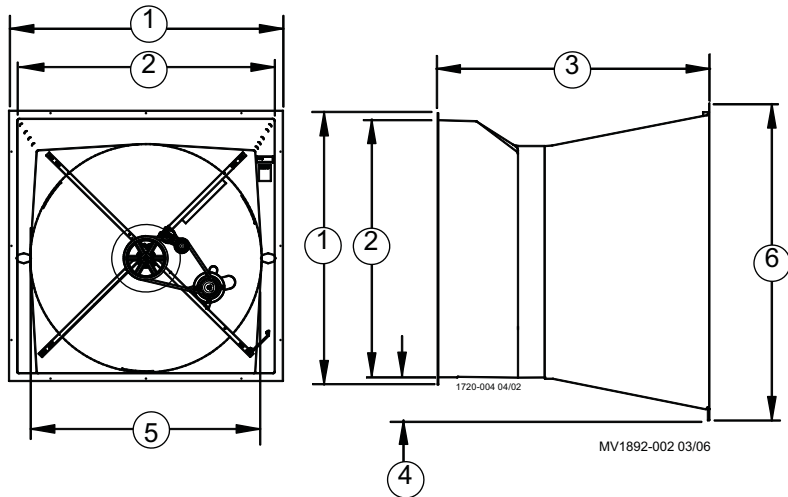


48" Belt Drive Fiberglass Fan with Tensioner Cone and Grill Fan Installation and Operators Instruction Manual



Fan Assembly Part Number	Fan Sub-Assembly Part Number	Fan Interior Color	Outlet	Voltage	Hz	Ph	HP	Motor Part No.	V-Belt p/n	Motor sheave Part No.
A38264-480X	A50232-02X	White	Cone						50271 (AX49)	24697 (AK32)
A38264-482X	A50232-22X	White	Cone	230	60	1	1	37729	50271 (AX49)	24697 (AK32)
A38264-483X	A50232-32X	White	Cone	220-240	50	1	1	37729	50270 (AX48)	37919 (AK34)
A38264-484X	A50232-42X	White	Cone	208-230/460	60	3	1	40157	50271 (AX49)	24697 (AK32)
A38264-485X	A50232-52X	White	Cone	220-240/380-415	50	3	1	36142	50270 (AX48)	37919 (AK34)
A38264-487X	A50232-72X	White	Cone	200/400	60	3	1	43290	50271 (AX49)	24697 (AK32)
A38264-488X	A50232-82X	White	Cone	208-230/460	60	3	1	44694	50271 (AX49)	24697 (AK32)
A38264-489X	A50232-92X	White	Cone	200/400	50	3	1	43290	50270 (AX48)	37919 (AK34)
A38264-484XS	A50232-42XS	White	Cone	208-230/460	60	3	1	40157	50271 (AX49)	24697 (AK32)
A46633-480X	A50232-02XB	Black	Cone						50271 (AX49)	24697 (AK32)
A46633-482X	A50232-22XB	Black	Cone	230	60	1	1	37729	50271 (AX49)	24697 (AK32)
A46633-482XS	A50232-22XBS	Black	Black Cone	230	60	1	1	37729	50271 (AX49)	24697 (AK32)
A46633-482XSW	A50232-22XBS	Black	White Cone	230	60	1	1	37729	50271 (AX49)	24697 (AK32)
A46633-483X	A50232-32XB	Black	Cone	220-240	50	1	1	37729	50270 (AX48)	37919 (AK34)
A46633-484X	A50232-42XB	Black	Cone	208-230/460	60	3	1	40157	50271 (AX49)	24697 (AK32)
A46633-485X	A50232-52XB	Black	Cone	220-240/380-415	50	3	1	36142	50270 (AX48)	37919 (AK34)
A46633-487X	A50232-72XB	Black	Cone	200/400	60	3	1	43290	50271 (AX49)	24697 (AK32)
A46633-488X	A50232-82XB	Black	Cone	208-230/460	60	3	1	44694	50271 (AX49)	24697 (AK32)
A46633-489X	A50232-92XB	Black	Cone	200/400	50	3	1	43290	50270 (AX48)	37919 (AK34)
A46633-484XS	A50232-42XBS	Black	Black Cone	208-230/460	60	3	1	40157	50271 (AX49)	37919 (AK34)
A46633-484XSW	A50232-42XBS	Black	White Cone	208-230/460	60	3	1	40157	50271 (AX49)	37919 (AK34)
A47898-482X	A50232-21X	White	Cone	230	60	1	1.5	49903	50270 (AX48)	24697 (AK32)
A47898-484X	A50232-41X	White	Cone	208/230-460	60	3	1.5	47693	50270 (AX48)	24697 (AK32)
A47898-485X	A50232-51X	White	Cone	200	50	3	1.5	50347	50270 (AX48)	24697 (AK32)
A47943-482X	A50232-21XB	Black	Cone	230	60	1	1.5	49903	50270 (AX48)	24697 (AK32)
A47943-484X	A50232-41XB	Black	Cone	208/230-460	60	3	1.5	47693	50270 (AX48)	24697 (AK32)
A38948-480X	A50232-02X	White	Grill						50271 (AX49)	24697 (AK32)
A38948-482X	A50232-22X	White	Grill	230	60	1	1	37729	50271 (AX49)	24697 (AK32)
A38948-483X	A50232-32X	White	Grill	220-240	50	1	1	37729	50270 (AX48)	37919 (AK34)
A38948-484X	A50232-42X	White	Grill	208-230/460	60	3	1	40157	50271 (AX49)	24697 (AK32)
A38948-485X	A50232-52X	White	Grill	220-240/380-415	50	3	1	36142	50270 (AX48)	37919 (AK34)
A38948-487X	A50232-72X	White	Grill	200/400	60	3	1	43290	50271 (AX49)	24697 (AK32)
A46750-480X	A50232-02XB	Black	Grill						50271 (AX49)	24697 (AK32)
A46750-482X	A50232-22XB	Black	Grill	230	60	1	1	37729	50271 (AX49)	24697 (AK32)
A46750-483X	A50232-32XB	Black	Grill	220-240	50	1	1	37729	50270 (AX48)	37919 (AK34)
A46750-484X	A50232-42XB	Black	Grill	208-230/460	60	3	1	40157	50271 (AX49)	24697 (AK32)
A46750-485X	A50232-52XB	Black	Grill	220-240/380-415	50	3	1	36142	50270 (AX48)	37919 (AK34)

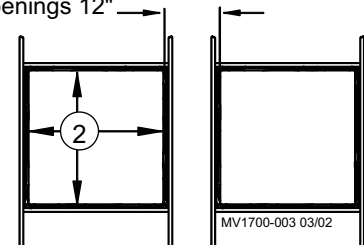
Fan and Fan Framing Dimensions



Slant Wall Fan	
Item	Description
1	58" [147.32 cm]
2	55" [139.70 cm]
3	50.25" [127.63 cm]
4	8" [20.32 cm]
5	48.5" [123.2 cm]
6	64.5" [163.83 cm]

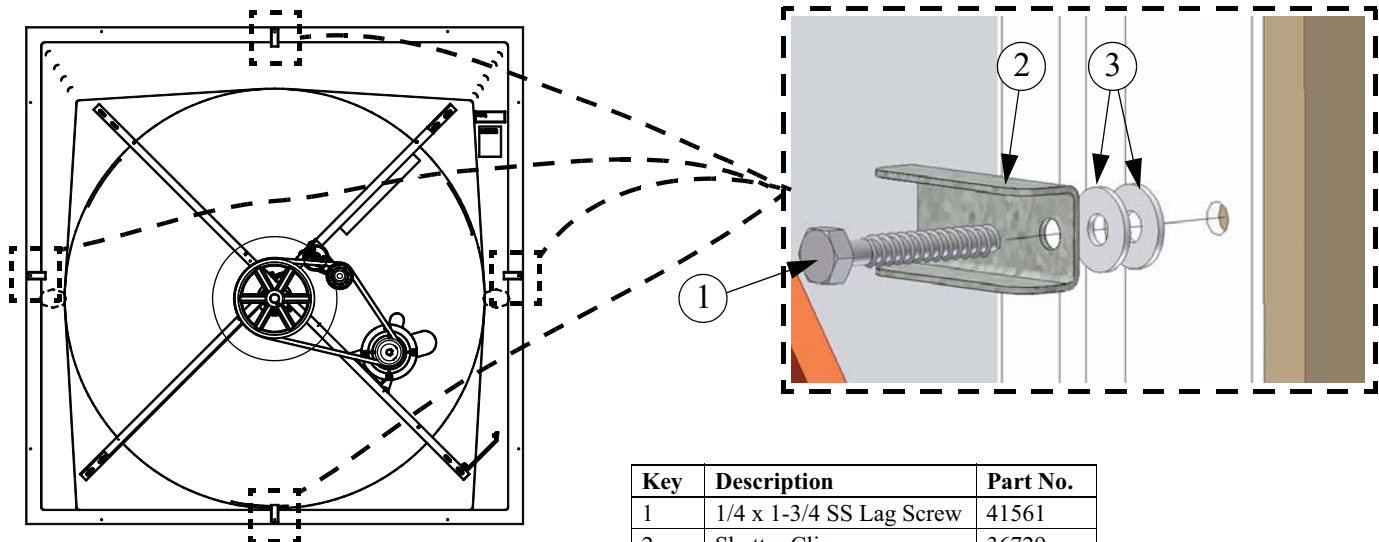
Planning the layout of the spacing between fans is very important. Spacing too close together will cause interference with the flanges. Allow a minimum of 12" between framed openings of adjacent fans.

Spacing Between Framed Openings 12"



Installation

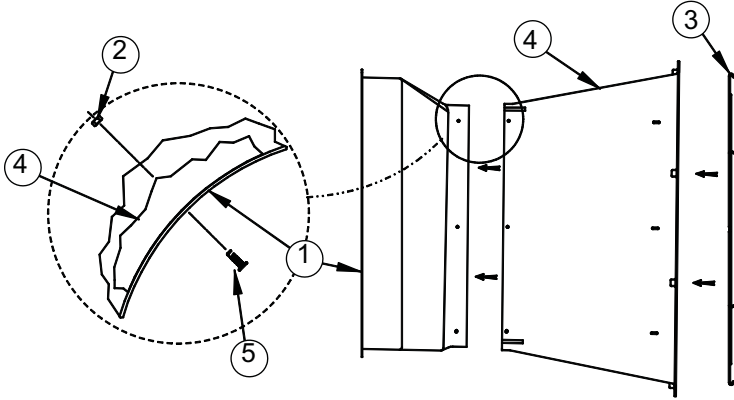
Insert the Fan Assembly in the wall opening and secure using the (12) 1/4 x 1-3/4 Lag Screws, (6) Shutter Clips, and (6) Nylon Washers provided. The Shroud is pre-drilled. The hardware must be installed as shown in the **Figure below**. This allows for rotation of the Shutter Clips when installing Shutter.



Key	Description	Part No.
1	1/4 x 1-3/4 SS Lag Screw	41561
2	Shutter Clip	36729
3	Nylon Washer	4856

Installing the Cone and Grill to the Fiberglass Fan

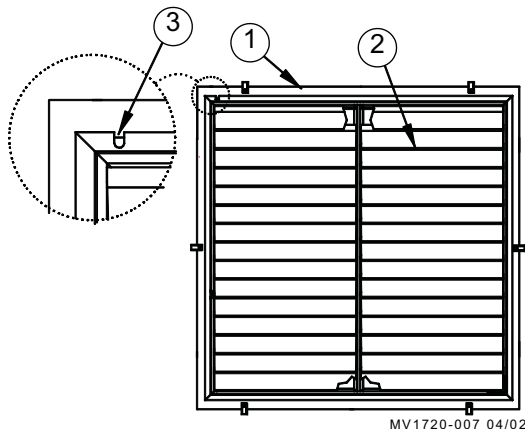
1. Slide the Cone onto the Shroud—the Shroud fits inside the Cone. (See Figure below)
4" slots are cut into the edge of the cone to allow expansion as the Cone is slid onto the Shroud.
2. Align the holes in the Shroud with the slots in the Cone.
3. Insert the (6) Wafer Head Bolts from inside the Shroud through the Cone and thread the Flange Nuts onto the ends of the Wafer Head Bolts.
4. Snap the Cone Grill into the slots on the outlet end of the Cone.



Key	Description	Part No.
1	Shroud (White)	37914
	Shroud (Black Interior)	46631
2	1/4-20 SS Hex Ser. Flange Nut	46298
3	Cone Grill	35199
4	Cone (White)	38268
	Cone (Black)	46630
5	1/4-20 x 7/8 Wafer Head Bolt	40775

Wiring

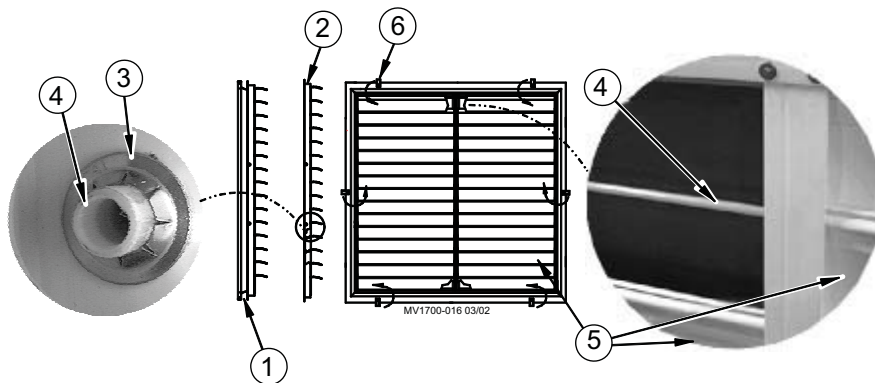
1. See Wiring diagram on Motor for Motor electrical connections. Follow local, state, and national electrical codes for wiring
2. Install an electrical disconnect within reach of each Fan.
3. Route the motor cord (not supplied) toward the upper left corner of the Fan and attach the cord to the Motor Mount using the three Cable Ties—included in the hardware package. Cut a 3/8" slot in the upper left flange of the Shutter frame, or cut an exit hole in the side of the Shroud to route the cord to a power source. **If exiting through the side of the Shroud use conduit and make sure that wires or conduit do not interfere with the Fan Blades or Shutter operation.**



Key	Description
1	Shroud
2	Shutter
3	3/8" Slot to Route Motor Cord

Shutter Installation and Part Numbers

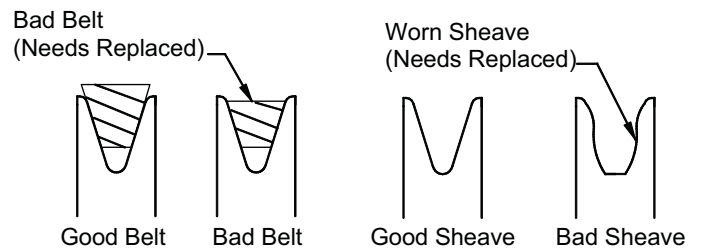
Position the Shutter, centered in the Fan Shroud, and rotate the Shutter Clips to lock the Shutter in place. Check the Shutter for proper operation—the shutter must be able to open and close freely without obstructions.



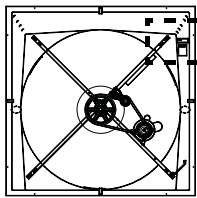
Item	Description	Part No.
1	Belled Plastic Shutter (White)	48291
	Belled Plastic Shutter (Gray)	48296
2	Flat Plastic Shutter (White)	38029
	Flat Plastic Shutter (Gray)	46716
3	Push Nut 1/4"	38032
4	Shutter Pivot Rod	38702-4
5	Shutter Louver (White)	38038-4
	Shutter Louver (Gray)	46715-4
6	Shutter Clip	36729

Maintenance

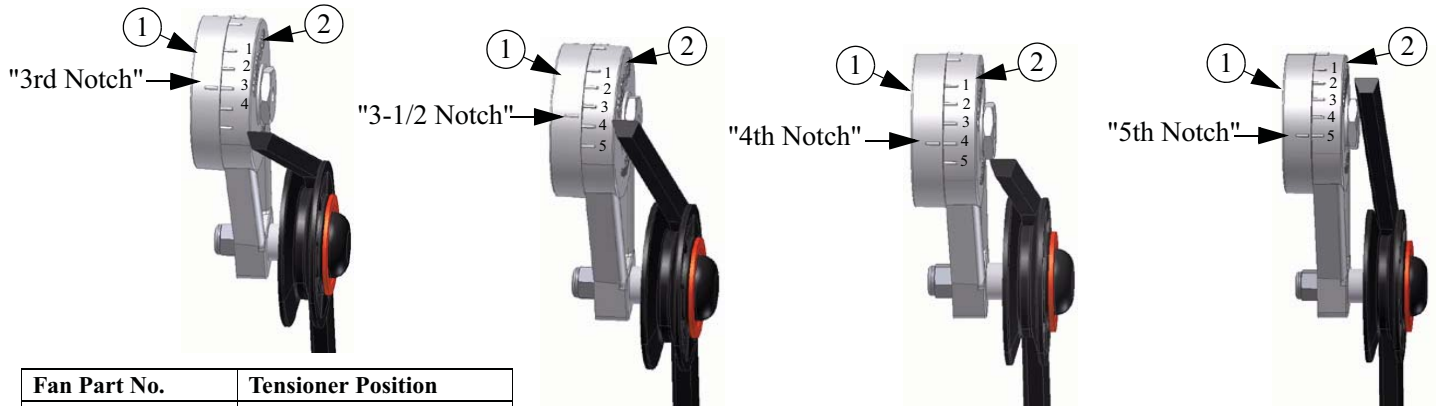
- Disconnect Power Prior To Maintaining Or Cleaning The Fan. The fan may start automatically causing serious injury or death.
- Service and repair of fans should be done only by a qualified technician.
- Keep the fan clean for maximum life and best performance. **Avoid spraying water on fan shaft bearings.**
- Minimize contact of moisture or corrosive chemicals to the surfaces of the fan components to maximize fan life.
- Periodically check the V-Belt and replace if necessary. A bad Belt will cause a substantial drop in Fan performance or it can break and cause Fan failure. If a Belt rides below the Sheave edge, replace the Belt. **(See Figure Below)**
- Keep Shutters, Blades, and Housing clear of obstacles for best air performance.
- The motor and fan shaft bearings are prelubricated. Grease zerks are provided on the fan shaft bearings for installations where relubrication is needed. Relubrication is required once annually or if water contacts the Bearings. Add only a small amount of grease to purge impurities out of the bearing seals.
- Use only high quality lithium soap base grease and clean all dirt from zerk before applying grease. Agile Manufacturing recommends using Shell Alvania # 2 in the fan shaft bearings.
- Check Sheaves for wear. Replace if Sheave groove is worn. **(See Figure to the Right).**



- Check Belt Tension. The Belt should be tensioned just tight enough to minimize Belt slippage. Over tensioning the belt will cause premature Belt and Bearing wear. With a new Belt, the notches on the outside wheel **(Item 1, below)** of the Tensioner should line up with the mark on the inside wheel **(Item 2)** of the Tensioner based on the **chart below**.



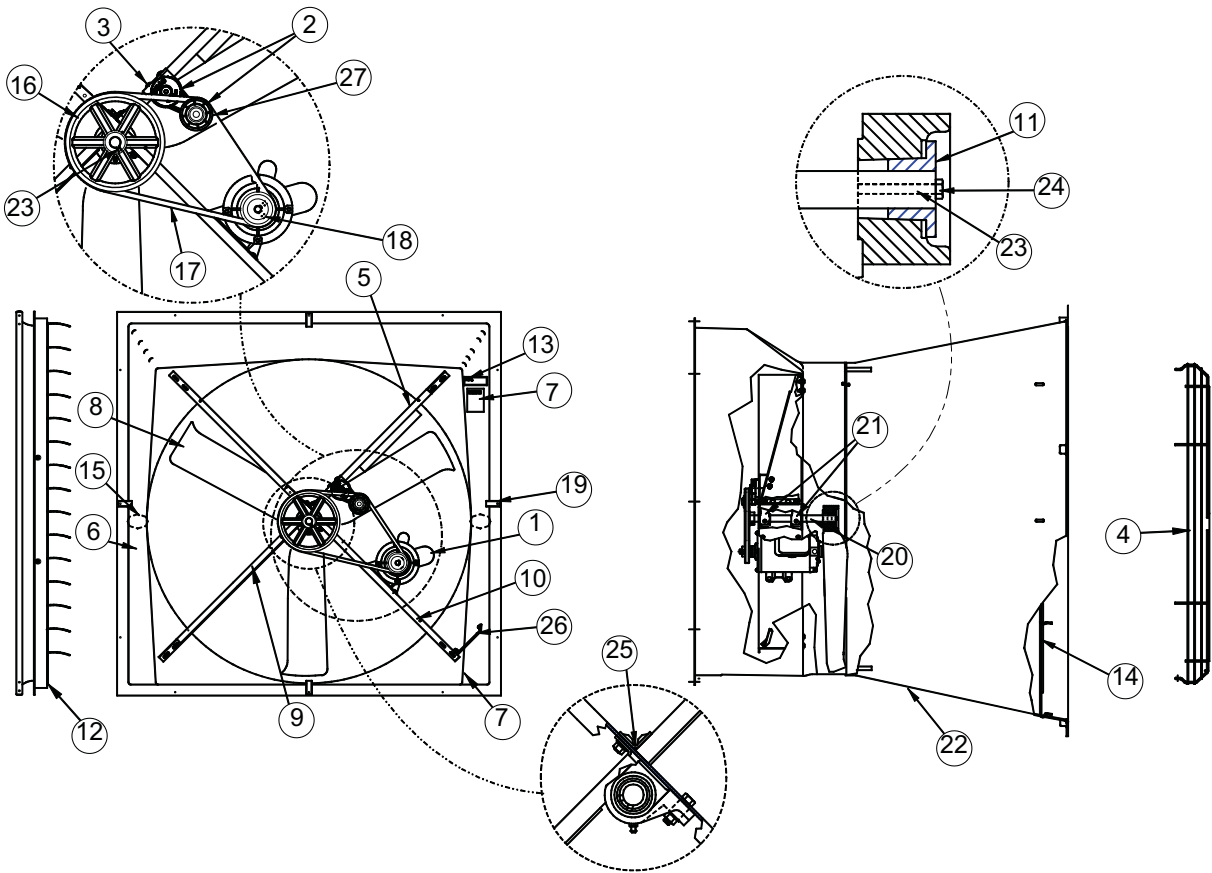
Fan Model Number
(see chart for correct Tensioner positioning with belt installed)



Fan Part No.	Tensioner Position
50232-32X Series	"3rd Notch"
50232-52X Series	
50232-92X Series	
50232-22X Series	"3-1/2 Notch"
50232-42X Series	
50232-72X Series	"4th Notch"
50232-82X Series	
50232-21X Series	"5th Notch"
50232-51X Series	
50232-41X Series	

Item	Description
1	Outside wheel on Tensioner
2	Inside wheel on Tensioner

Itemized Parts



Part Numbers

Fan Part Numbers		
Item	Description	Part No.
1	Motor	Varies**
2	3.5" Arm 3" Dia. Tensioner Assembly	48429
3	48" Tensioner Bracket	50233
4	Fiberglass Fan Shroud Grill	37921
5	Upper Motor Mount Support	50266
6	Fan Shroud (White)	37914
	Fan Shroud (Black Interior)	46631
7	Danger Decal	2527-50
8	48" Cast Aluminum Fan Blade	38903
9	Lower Motor Mount Support	37732
10	48" Fan Motor Mount	50267
11	1" Taper Lock Hub	38909
12	48" Shutter	Varies*
13	Identification Decal	Varies
14	Cone Grill	35199
15	Pro-terra Systems Decal	2525-67

Item	Description	Part No.
16	Sheave	Varies**
17	Grip Notch V-Belt	Varies**
18	Motor Sheave	Varies**
19	Shutter Retainer	49485
20	1" Shaft	39688
21	1" Pillow Block Bearing	50553
22	Outlet Cone (White)	38268
	Outlet Cone (Black)	46630
23	1/4x1-1/8 Sq. Key	2419-2
24	1/4-20x1.00 SS Hx Hd Bolt	4404-11
25	Motor Mount Connector Angle	47877
26	48" Motor Mount Brace	39710
27	Idler with Bushings (For Repair)	50879
*See Shutter Part Numbers on Page 3		
**See Motor Specifications and Part Numbers on Page 1		

Warranty Information

Agile Manufacturing warrants new Fiberglass Fans and components manufactured by it to be free from defects in material or workmanship from the date of initial installation by the original purchaser until expiration of the appropriate period set forth below. If such a defect is found by Agile Manufacturing to exist within the applicable period, Agile Manufacturing will, at its option, (a) repair or replace such product free of charge, F.O.B. the factory of manufacture, or (b) refund to the original purchaser the original purchase price, in lieu of such repair or replacement. The extended warranty is provided to the original purchaser for the following periods:

- *1. **Fiberglass Fan** housings and cast aluminum blades - for as long as the original purchaser owns the product.
- *2. **Fiberglass Fan** motors and bearings - for two years from date of installation.
- *3. **Fiberglass Fan** components, including plastic shutters and polyethylene cones - for three years from date of installation.

Conditions and Limitations

1. The product must be installed by and operated in accordance with the instructions published by the **Manufacturer or Warranty will be void.**
2. Warranty is void if **all components** of the system are not original equipment supplied by the **Manufacturer.**
3. This product must be purchased from and installed by an authorized distributor or certified representative thereof or the Warranty will be void.
4. Malfunctions or failure resulting from misuse, abuse, mismanagement, negligence, alteration, accident, or lack of proper maintenance, or from lightning strikes, electrical power surges or interruption of electricity shall not be considered defects under the Warranty. Corrosion, material deterioration and/or equipment malfunction caused by or consistent with excessive additions or application of chemicals, minerals, sediments or other foreign elements with the product shall not be considered defects under the Warranty.
- "5. This Warranty applies only to systems for the care of poultry and livestock. Other applications in industry or commerce are not covered by this Warranty.

The **Manufacturer** shall not be liable for any **Consequential or Special Damage** which any purchaser may suffer or claim to suffer as a result of any defect in the product. "**Consequential**" or "**Special Damages**" *as used herein include, but are not limited to, lost or damaged products or goods, costs of transportation, lost sales, lost orders, lost income, increased overhead, labor and incidental costs and operational inefficiencies.*

THIS WARRANTY CONSTITUTES THE MANUFACTURER'S ENTIRE AND SOLE WARRANTY AND THIS MANUFACTURER EXPRESSLY DISCLAIMS ANY AND ALL OTHER WARRANTIES, INCLUDING, BUT NOT LIMITED TO, EXPRESS AND IMPLIED WARRANTIES AS TO MERCHANTABILITY, FITNESS FOR PARTICULAR PURPOSES SOLD AND DESCRIPTION OR QUALITY OF THE PRODUCT FURNISHED HEREUNDER.

Pro-Terra® distributors are not authorized to modify or extend the terms and conditions of this Warranty in any manner or to offer or grant any other warranties for Agile Manufacturing's products in addition to those terms expressly stated above. An officer of Agile Manufacturing must authorize any exceptions to this Warranty in writing. The Manufacturer reserves the right to change models and specifications at any time without notice or obligation to improve previous models.

Safety

Carefully read all safety messages in this manual and on your equipment safety signs. Follow recommended precautions and safe operating practices. Keep safety signs in good condition. Replace missing or damaged safety signs.

Decal Descriptions

DANGER: Electrical Hazard

Disconnect electrical power before inspecting or servicing equipment unless maintenance instructions specifically state otherwise. Ground all electrical equipment for safety. All electrical wiring must be done by a qualified electrician in accordance with local and national electric codes. Ground all non-current carrying metal parts to guard against electrical shock. With the exception of motor overload protection, electrical disconnects and over current protection are not supplied with the equipment.

DANGER: Rotating Fan Blade

Keep Hands away. Disconnect power before servicing. Fan may start automatically. Do not operate the Fan without the screens in place.

Disregard to the above mentioned **Danger** may cause serious injury including death.

- Keep all Safety Signs and decals in good condition.

Replace damaged or missing decals.





Note: The original, authoritative version of this manual is the [English] version produced by CTB, Inc. or any of its subsidiaries or divisions, (hereafter collectively referred to as "CTB"). Subsequent changes to any manual made by any third party have not been reviewed nor authenticated by CTB. Such changes may include, but are not limited to, translation into languages other than [English], and additions to or deletions from the original content. CTB disclaims responsibility for any and all damages, injuries, warranty claims and/or any other claims associated with such changes, inasmuch as such changes result in content that is different from the authoritative CTB-published [English] version of the manual. For current product installation and operation information, please contact the customer service and/or technical service departments of the appropriate CTB subsidiary or division. Should you observe any questionable content in any manual, please notify CTB immediately in writing to: CTB Legal Department, P.O. Box 2000, Milford, IN 46542-2000 USA.

Revisions to this Manual

Page No.	Description of Change
Various	Changed (8916) Nylon Nut to (46298) SS Hex Serrated Nut. Deleted Nylon Washer (4856). Added information to BOM to designate (50879) as a repair part.

Contact your nearby Pro-Terra® distributor or representative for additional parts and information.

Agile Manufacturing
720 Industrial Park Rd.

Anderson, Missouri 64831 U.S.A.

Phone: 1-800-704-7356 • Web Site: www.proterrasystems.com • E-Mail: agile@agilemfg.net

Agile Manufacturing is a division of CTB Inc. Milford, Indiana

Printed in the U.S.A